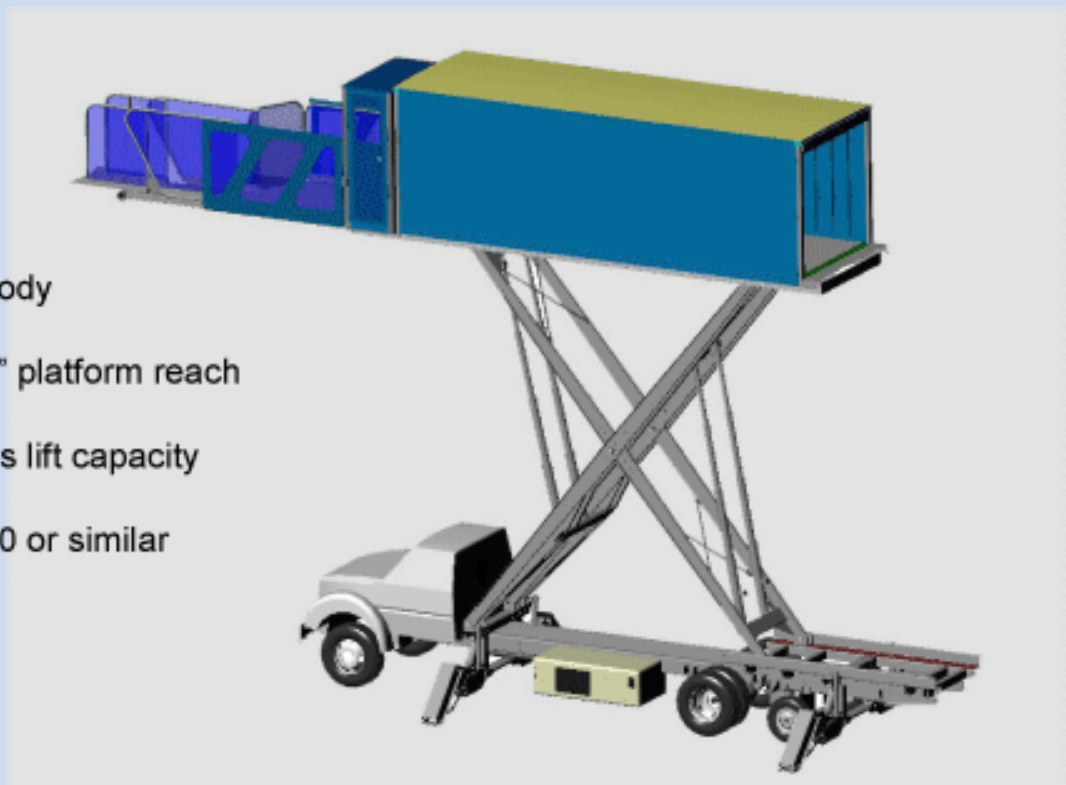


# Catering Lifts

## Wide Body A380



- 24' van body
- 105"-336" platform reach
- 10,000 lbs lift capacity
- Ford F750 or similar

Tesco lift design make us an industry leader with over 65 years experience. Our hi-lifts are among the smoothest operating hi-lifts in the industry.

### AIRCRAFT APPLICATIONS:

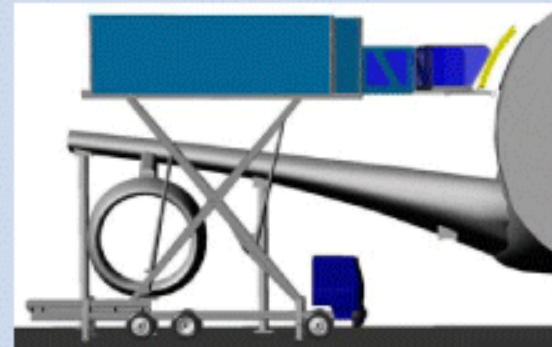
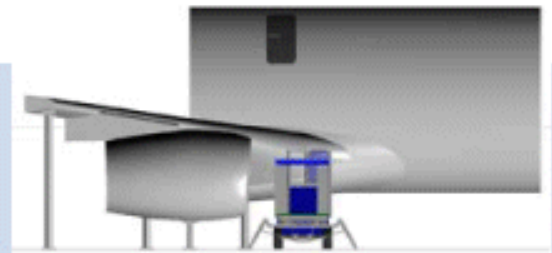
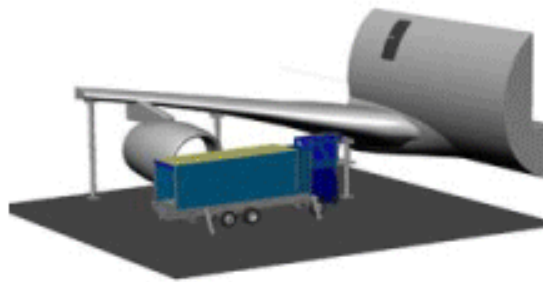
AIRBUS A380  
All Wide Body Aircraft &  
Many Narrow Body Aircraft



# Wide Body A380

## Hi-Lift Specification

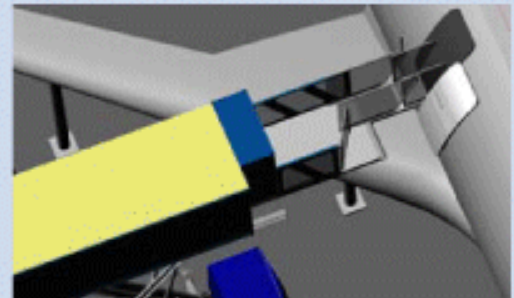
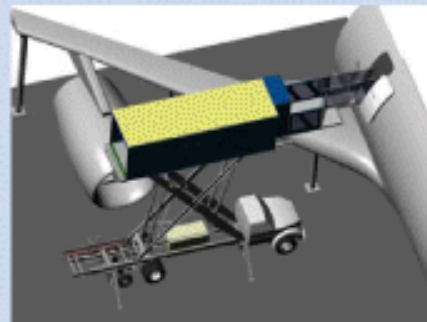
- Payload capacity 10,000 lbs (4,545 kg).
- Single scissor lift system
- Wide scissors for great stability
- Four main cylinders
- Auto-Traversing body: 3 ft from aircraft as it is lifted above wide body height
- 4-Way movable porch and front platform
- Operator positioned for maximum visibility
- Forward control station for final positioning
- Wing sensor under & over platform stops lowering or raising if proximity sensed.
- Interlocks to prevent lowering body until platform is fully retracted & stowed



PLATFORM HANDRAIL SYSTEM PROVIDES MAXIMUM PROTECTION DURING OPENING OF AIRCRAFT



BOOSTER CYLINDERS AT EACH CORNER OF BODY



Electrical Controls

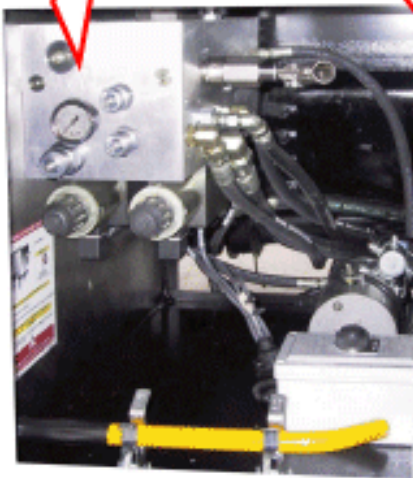


Hydraulic Systems

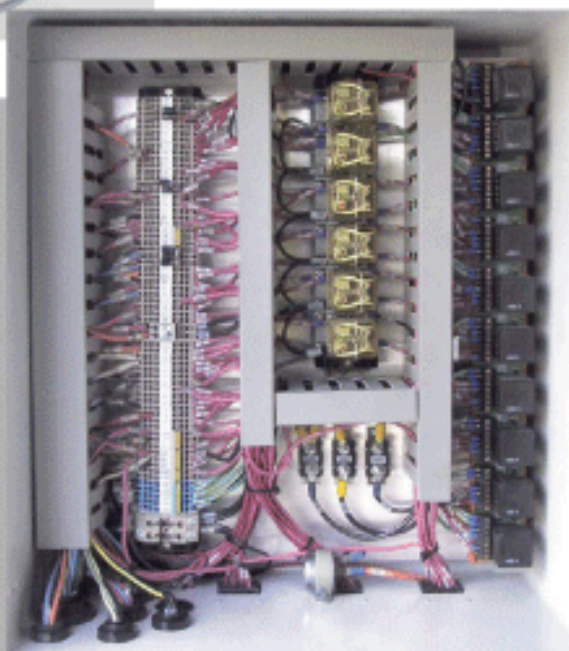




**TESCO's Self Contained Hydraulic & Electrical Systems provide the simplicity and ease of maintenance to meet the demands of our customers.**



**Our Plug & Play system was designed specifically for Aviation Catering applications.**



**Each component can be easily detached and replaced for reduced maintenance time.**

**LED indicators on every relay allow easy troubleshooting.**

**Standard Automotive components easily sourced in local markets.**

We offer a full line  
Aluminum, FRP and Insulated  
Van bodies.



**FORWARD PLATFORM CONFIGURATIONS include  
Full Width, Two Way moving  
and Four Way moving platforms.**

